



WOMEN / HOODIE
SWEATSHIRTS
STELLA TRIGGER

 20 per box

STSW148

The iconic women's hoodie sweatshirt

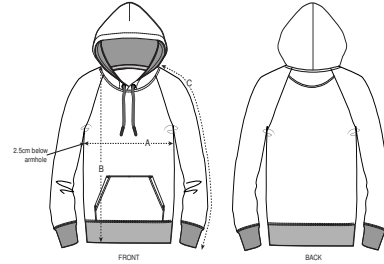
Terry Sweatshirt
85% Organic ring-spun Combed Cotton, 15% Recycled Polyester
350 GSM

- Raglan sleeve
- Double layered hood in self fabric
- Round drawcords in matching body colour with metal tipping
- Stitched buttonhole eyelets
- Inside herringbone back neck tape
- Self fabric half moon at back neck
- Single needle topstitch at neckline
- 1x1 rib at sleeve hem and bottom hem with twin needle topstitch
- Kangaroo pocket with wide double topstitch

MEDIUM FIT

XS S M L XL XXL*

Size guide



| | SIZES | XS | S | M | L | XL | XXL |
|---|---------------|------|----|------|------|----|------|
| A | Half Chest | 50.5 | 53 | 56 | 59 | 62 | 65 |
| B | Body Length | 59 | 61 | 63 | 65 | 66 | 67 |
| C | Sleeve Length | 69.8 | 71 | 72.5 | 73.8 | 75 | 76.3 |

Combo options



Stanley Flyer

Printing Specifications

Fits all kind of printing techniques. Please visit our website for more information.

Wash similar colours together, do not iron on print, wash and iron inside out.



COLORS



ESSENTIAL HEATHERS



SPECIAL HEATHERS



*Size available on limited number of colours
Please check our webshop for latest information